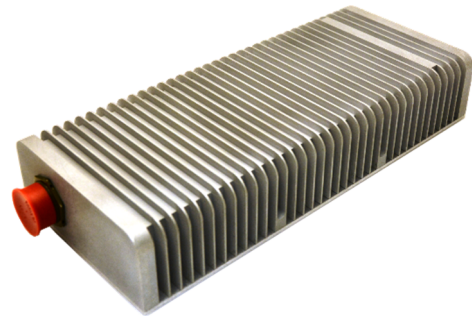


## Features

- 24 V output, 100 W
- 85 to 264 VAC, 1 phase, 50-400 Hz
- Meets MIL-STD-704
- On-Off Switch
- Natural Convection Cooled
- Efficiency >86%
- Ripple 1% Vout max (pk-pk)
- Regulation 5%, line and load
- Isolated



## Brief Description

This enclosed AC-DC power supply is designed to meet inhabited environments. It complies with the input voltage requirements of MIL-STD-704 and has a hold-up time of 50 msec. It weighs 8 lbs and is natural convection cooled.

## Input Voltage

85 to 264 VAC, 1 phase, 50-400 Hz

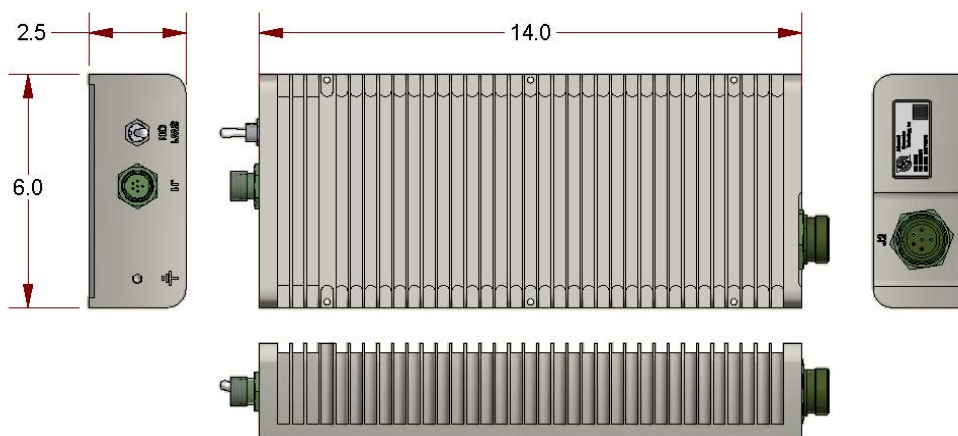
## Output Voltage, Currents, and/or Power

24 V at 100 W

## Environment

Temperature: -40°C to +71°C operating  
-40°C to +85°C non-operating  
Vibration: MIL-STD-202G, NAVMAT P-9492  
Shock: MIL-STD-202, Method 213, Test Cond J  
EMI: MIL-STD-461 CE101, CE102

## Outline Drawing



**Size:** 14.0 x 6.0 x 2.5 in

**Connectors:** Input (J1): D38999/24WB98PN, Output (J2): D38999/24WE6SN

For additional details, please contact ACT at (717) 939-2300 or [salesinfo@actpower.com](mailto:salesinfo@actpower.com)

© 2017, All Rights Reserved, Specifications subject to change without notice

2001 Fulling Mill Road • Middletown PA 17057 • 717 939-2300 • F: 717 939-7170 • [www.actpower.com](http://www.actpower.com)

