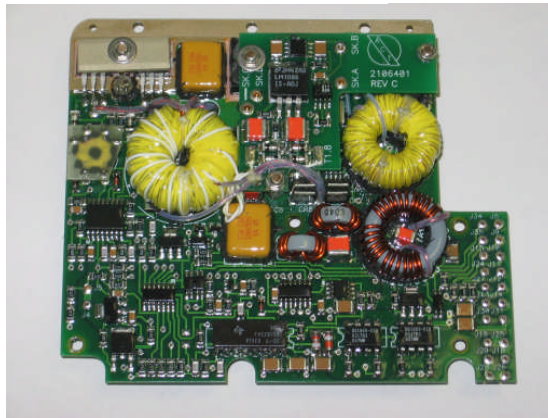




Advanced Conversion Technology, Inc.

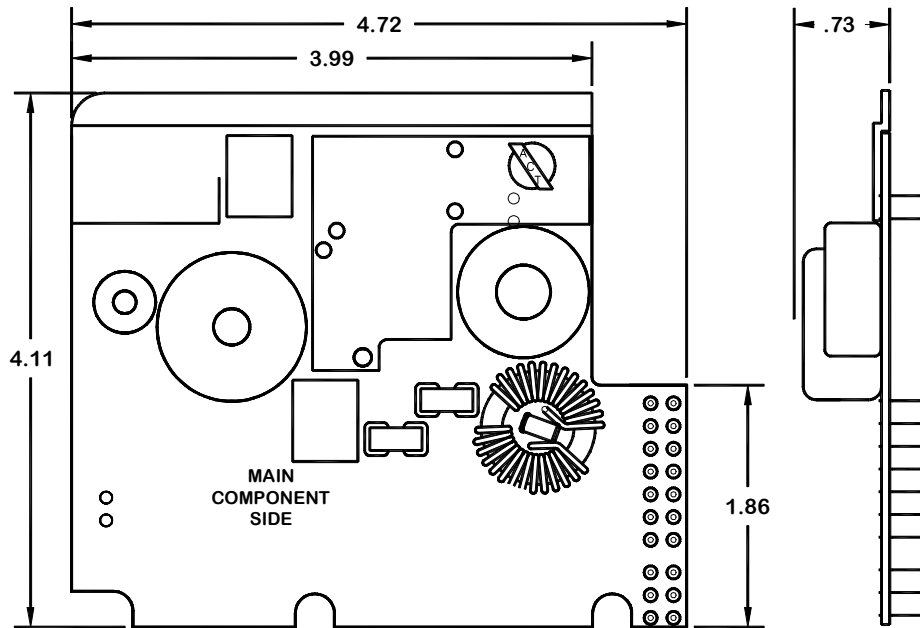
LASER POWER UNIT DC/DC POWER SUPPLY SR - 2106

This laser DC/DC converter operates from +28VDC MIL-STD-704 power and produces a +150 VDC output voltage which is used to charge a 6,300 μ F load capacitor. A EMI Filter enables this design to meet the EMI requirements of MIL-STD-461. It's simple construction provides a rugged and cost effective solution for intergration into the overall laser system.



FEATURES

- 165 Watts Output Power
- >85% Efficiency
- Adjustable Output Voltage
- Adjustable Output Current
- Remote On/Off
- Oversholtage Protection
- Overtemperature Protection
- Power Good Signal



ELECTRICAL CHARACTERISTICS

Input Voltage: +28VDC Nominal per MIL-STD-704 (+22VDC to +36VDC)
+15VDC +/- 5% Bias Voltage

Outputs:
+150 VDC +/- 10V @ 1.1A
3,300 μ F capacitor load

Environmental:
Temperature Range: -40°C to +85°C
Vibration: F16 Composite Performance
Shock: 20 G's, 11msec, 1/2 sine pulses
Weight: <15 ounces

Connector: Input: Pins Output: Pins

Specifications subject to change without notice

Copyright 2006, All Rights Reserved: 2001 Fulling Mill Rd, Middletown, PA 17057

Phone: (717) 939-2300 Fax: (717) 939-7170 Website: www.actpower.com E-mail: mail@actpower.com