



Advanced Conversion Technology, Inc.

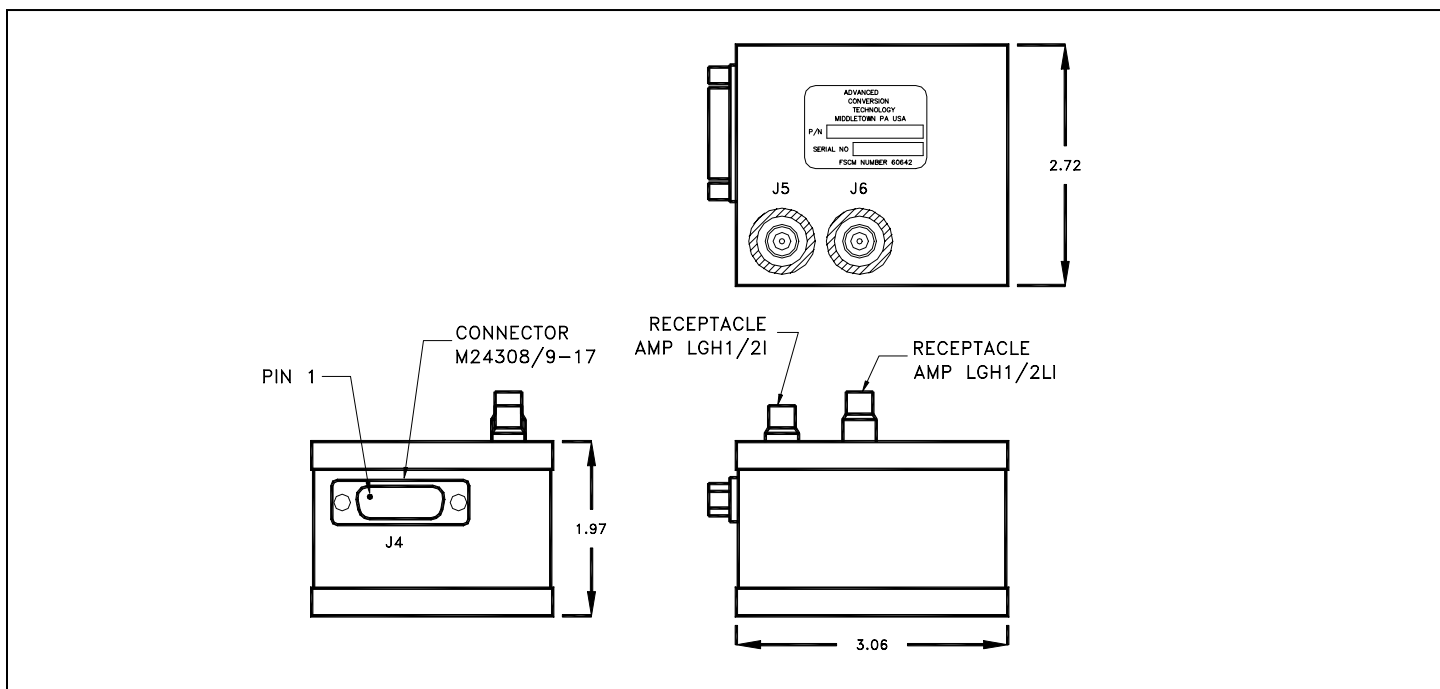
HIGH VOLTAGE DC/DC MULTI OUTPUT CRT POWER SUPPLY SR - 12071

This hermetically sealed CRT Power Supply is designed to supply the various high voltage outputs required by a cathode ray tube operating in an airborne fighter environment. ACT's proprietary oil-gas approach achieves complete protection against the elements and mechanical and thermal concerns.



FEATURES

- Hermetically Sealed
- Compact Size
- Multi Output
- Short Circuit Protection
- Reverse Polarity Protection
- Highly Reliable
- Factory Repairable
- MIL-E-5400 Design
- Remote Adjust



ELECTRICAL CHARACTERISTICS

Input Voltage: +15 VDC $\pm 10\%$ and -15 VDC $\pm 10\%$

Outputs:

Environmental:

Voltage	Current	Temperature	-55°C to +71°C
+7KV $\pm 2\%$	100 μ A	Vibration	MIL-STD-810C METHOD 514.2
800 VDC to 1400 VDC	350 μ A	Shock	MIL-STD-810C, METHOD 516.2
+300 VDC $\pm 2\%$	75 μ A	RFI	MIL-STD-461
70 VDC $\pm 10\%$	8mA	Humidity	MIL-STD-810C, METHOD 507.2
		Altitude	50,000 FT.

Environmental: Meets full military and industry requirements.

Other: Connectors: J4: M24308/9-17, J5: LGH-1/2I, J6: LGH-1/2LI